

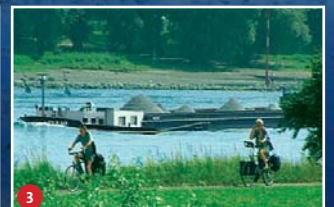
rhein
kreis
neuss

Good Living
in Rhein-Kreis Neuss





Pleasant landscapes	4
Historic highlights	6
Cultural showplaces	8
Festive events	10
Entertaining activities	12
General Map	16
Successful locations	20
Educational prospects	22
Natural energies	24
Well connected	26
Good neighbours	28
Good contacts	30





Hans-Jürgen Petrauschke
Landrat

Welcome to Rhein-Kreis Neuss

Good quality of life and top economic growth – this is rarely found in the same place. Yet in Rhein-Kreis Neuss both apply. How is that so?

On the one hand, the county has plenty of outstanding locational factors by virtue of its geography. On the other, despite being tied to our local roots, we maintain good relations with our neighbours and the whole world. This significantly improves our living conditions and those of the whole region.

We don't consider the Rhine to be a border but a link. The many bridges connecting us with Düsseldorf, the state capital of North Rhine-Westphalia, bear witness to this. We also pursue the same interests as the other cities and districts around us. Together, we have created a unique European living space and economic region.

2,000 years ago the Romans settled here. Rhein-Kreis Neuss now has around 450,000 inhabitants. This brochure shows why they and our guests like it here so much. But of course, the best way to experience the special Rhenish way is to see it for yourself. Personally, one-on-one, from person to person, because that is the standard which defines the way we think and act.

One county for all, all for one county. Welcome, in alphabetical order, from the cities of Dormagen, Grevenbroich, Kaarst, Korschenbroich, Meerbusch, Neuss as well as the municipalities of Jüchen and Rommerskirchen. We hope you enjoy reading this brochure and look forward to finding even more friends, near and far, in the future.

On this note, welcome to Rhein-Kreis Neuss

Hans-Jürgen Petrauschke
Landrat

Schloss Dyck, Jüchen:
Centre for garden art and
landscape culture.

- 2 Düsseldorf International
airport: Largest air traffic
hub in North Rhine-West-
phalia.
- 3 The Rhine near Meerbusch:
Lifeline of an ancient cultu-
ral landscape.
- 4 Ständehaus, Grevenbroich:
Official residence of the
Landrat, in front of it a
sculpture by Heinz Mack.
- 5 Ilvericher Schlinge,
Meerbusch: Typical Rhine
pasture in the landscape
conservation area.

Human

standards





1



That's why it's so beautiful on the left bank of the Lower Rhine

“Father Rhine” is known throughout the whole world as the large river in Western Europe. The Rhine is associated with ancient legends and romantic myths. But the Rhine is more than just a river; it represents a lifeline, for nature and for the culture of the people who have settled here over the millennia.

Each Rhine landscape has its own charms – as does the left bank of the Lower Rhine, here in Rhein-Kreis Neuss. What leaves a lasting impression on most visitors is its breed of people, which has also been shaped by the landscape. Rhinelanders have a reputation for being affable and full of the joys of life. The land and the people love being hospitable.

City plus the countryside plus river equals county

The density of the large cities and areas with numerous open spaces in and around the county: This range of opposites is where Rhein-Kreis Neuss draws its strength from – for the largest economic growth of all the cities and counties in North Rhine-Westphalia and for a proven high quality of life with numerous cultural, leisure and sport facilities on offer.

Rhein-Kreis Neuss has developed as a cultural landscape since time immemorial. Extremely productive soils, a mainly flat terrain and a mild climate initially provided for intensive agriculture. Today the fields and pastures still serve as a source of income. But, with its numerous parks and gardens, meadows and avenues, the natural environment also forms a living space in which people can relax and recuperate.

1 Winter landscape, Dormagen: Snow doesn't fall very often in the Lower Rhine region, and the brilliant white cover seldom lasts long.

2 Fruit tree blossoms, near Jüchen: Around 60% of the county's area is still used agriculturally.

3 Erft, near Neuss: From its source in the Eifel the Rhine tributary flows through the county from the southwest to the northeast.

4 Corn harvest, near Grevenbroich: Productive loess clay soils and a mild climate with rain the whole year round favour agriculture.

5 Half-timbered houses, Korschenbroich-Liedberg: Time and again, reminders of the good old days.

6 Tulip fields, Korschenbroich: Apart from market gardening, traditional large fields full of tulips and other flowers can be found here.

Pleasant landscape





Novesia, the New: Roman city, Hanseatic city and Germany's largest chief county town today

As Augustus Caesar reigned over the Roman Empire, his soldiers built a military camp to the south of what is now the old city of Neuss. It is one of the three oldest Roman settlements in Germany. Apart from Novesia, there are numerous other witnesses of these over two thousand year old foundations in Rhein-Kreis Neuss.

During the course of time, the Normans and Spaniards, Carolingians and Merovingians, French and Prussians also all left behind evidence of their presence. What many people don't know is that Neuss is a Hanseatic city and with around 150,000 inhabitants, it is Germany's largest chief county town today.

Zollfeste Zons: The Middle Ages, just like in a fairy tale

The first fortifications were built at the beginning of the 12th century. The most famous in Rhein-Kreis Neuss is Zollfeste Zons, which belongs to Dormagen. The "Lower Rhine Rothenburg" is a mediaeval gem. The former state castle of the Electors of Cologne with its intact historic cityscape attracts numerous visitors from the surrounding region. And international tourists come from far away to enjoy the impressive atmosphere or to view the changing exhibitions which can be seen in the Rhein-Kreis Neuss culture centre also located here.

Monasteries, convents, churches, palaces, manors: Country outing as a journey through time

Neuss and Zons are only two destinations for lovers of historic building culture. Numerous castles and palaces, grand houses and farmsteads can be found in Rhein-Kreis Neuss. A tour through the country brings history alive, because many of the monuments are well-kept and invite you to take a closer look.

Many important sites are set up as museums in order to give insights into the region's tradition. But history is also brought alive – for example during the festive days of early music in Knechtsteden monastery – and culture is staged live.

1 Quirinus-Münster, Neuss: Late Romanesque establishment with a characteristic Baroque dome.

2 Obertor, Neuss: Only surviving city gate of the mediaeval fortifications.

3 Knechtsteden Monastery, Dormagen: An impressive ensemble of 12th century Romanesque buildings.

4 Schloss Myllendonk, Korschenbroich: This building, first mentioned in 1166, was the residence of one of the Lower Rhine's most important noble families.

5 Schloss Hülchrath, Grevenbroich: Built ca. 1120, typical Lower Rhine castle buildings.

6 Zollfeste Zons, Dormagen: The idealised model of a mediaeval city building complex – and a popular destination for visitors.

Historic highlights



6



Exemplary: Two variations on the theme of integrated works of art

It is not surprising that a county with around 450,000 inhabitants has several cultural attractions. What is unusual is how it has succeeded to combine culture with nature and historic buildings with contemporary references in two different places.

The directly adjacent “play areas” of Hombroich and Dyck represent internationally outstanding showplaces of innovative exhibition concepts.

Museum Insel Hombroich: Art parallel with nature – and a former rocket-launching station as an avant-garde launching ramp for culture and architecture

Museum Insel Hombroich is on the one hand unique and yet on the other it is characteristic for the cultural climate in Rhein-Kreis Neuss. Unique, because nowhere else can such an individual project be found for presenting an equally important and unconventional collection of modern and progressive art as well as old Asian art.

Characteristic too, because it was possible to realise such a production here, in the typical Lower Rhine landscape of the renaturalised Neusser Erftauen near Holzheim – in an alliance of private entrepreneurial élan, cultural policy will and, above all, artistic energy.

The vision of a partnership and working cooperative of artistic personalities is continuing to develop within the grounds of a former rocketlaunching station, where research is carried out in a free spirit and the projects of writers, photographers, architects and artists from diverse disciplines take form.

Schloss Dyck Foundation: Centre for garden art and landscape culture

The impressive Dyck moated castle is considered to be one of the most important cultural monuments of the Lower Rhine. It can look back on an almost 1000-year old history and forms the heart of the park and gardens, extending over around 70 hectares.

Today the Schloss Dyck Foundation has a unique purpose as a centre for garden art and landscape culture. Exhibitions on various themes as well as the individual presentation of internationally renowned artists fascinate hundreds of thousands of visitors each year. And the “Neue Gärten” or “new gardens” present contemporary theme gardens, embedded in a “sea of *Miscanthus sinensis*” (*Miscanthus* “Silver Feather”).

At the same time, Schloss Dyck also pays attention to hospitality and tends the creature comforts of its visitors. Stylish catering offers and superb function rooms leave nothing to be desired.

Hombroich rocket-launching station, Neuss: Accessible sculpture by Katsuhito Nishikawa.

- 2 Schloss Dyck, Jüchen: A moated castle founded on four “islands” with expansive parks and gardens.
- 3 Kreismuseum Zons, Dormagen: Part of the culture centre, with an important collection of Jugendstil (art nouveau) pewter ware.
- 4 Clemens-Sels Museum, Neuss: With a valuable collection of symbolic paintings and numerous testimonies of the city’s 2,000-year history.
- 5 Sinsteden Culture Centre, Rommerskirchen: The county’s agricultural museum presents changing exhibitions in an old farmyard – the Ulrich Rückriem sculpture halls are on the same site.
- 6 Hombroich rocket-launching station, Neuss: Accessible sculpture by Katsuhito Nishikawa.

Cultural showplaces





1



2



3



4

1804
TILMBOURKORPS

Rhenish cheerfulness – cultivated throughout the county, renowned throughout the world

It is well known that in Rhineland there are not four but five seasons, the extra one being carnival. This cheerfulness is not at all artificial, it is virtually a basic right here. The numerous guests, who take part in the many celebrations between “Hoppeditz-Erwachen” and Ash Wednesday, experience this for themselves.

Rhinelanders join in the celebrations as they come

And because the Rhinelanders have crazy carnival behaviour in their blood, they are in the mood to celebrate all the year round, and in Rhein-Kreis Neuss there are plenty of occasions for this.

The old custom of “Schützenfests” is particularly popular. Nowhere else has a larger regiment than the one in Neuss. And the grand Schützenfest procession is an attraction which extends far beyond the borders of the city and county. Year in and year out, Neuss annual fair attracts a million spectators.

Schützenfest or organ concert, rock, rave or Shakespeare: As you like it

What used to be a festival is now the event. Whichever way you look at it, sociability is high on the list of priorities in Rhein-Kreis Neuss. There are events for every taste. Not only the public festivals and funfairs, but also “serious culture” has its place, classical concerts for example, and great theatre.

For example, Neuss’ Globe theatre, a replica of the historic original, is a famous stage for the popular Shakespeare festival. The title of one of the old master’s plays is an ideal motto for the cultural policy of Rhein-Kreis Neuss, “As you like it”.

Schützenfest, Neuss: Each year more than 6,000 active members march in the “Königsparade”.

- 2 Four youth music schools in the county: Musical development is fostered here from a young age.
- 3 Shakespeare Festival, Neuss: Presented annually in the “Globe”, a faithful replica of the London theatre of 1559.
- 4 Annual fair, Grevenbroich: Great fun for young and old, from spring to autumn, each week in a different venue, in the whole county.
- 5 Carnival, Neuss: Rhenish cheerfulness to a T.
- 6 Open Air Festival, Meerbusch: Rock acts for a fan base which increases in size each year.

Festive events





1



Cycling or riding, skating or skateboarding: A clear run for all pleasures

The best thing about Rhein-Kreis Neuss is undoubtedly its beautiful landscape, in which there is so much to do. Whether a trip into the country or simply setting off with no definite goal – everyone can find a spot to relax here.

The flat landscape of the Lower Rhine is of course ideally suited for long walks or longer cycle trips. Which is why in 2004, Rhein-Kreis Neuss was already singled out as a “cycle-friendly county” in North Rhine-Westphalia. Horse riders also get their money’s worth. The facilities for roller skaters are also well developed. And all types of water sports traditionally belong to the classic disciplines in Rhein-Kreis Neuss.

The density of public and private golf courses follows the trend towards physical exercise, which more and more people are seeking in harmony with nature.

Recently, more exotic types of sport have become available, such as an artificial snow hall for skiers and snowboarders, which has quickly developed into a real crowd-puller with over one million visitors to date.

Sport alone, in pairs or with the whole family: The main thing is zest for life

Sport is an important part of human life. Its growing importance is taken into account by Rhein-Kreis Neuss. There is a rich choice of activities, above all for children and young people, which can either be pursued as the mood takes you – or in one of the many clubs.

Mass sports form the basis of those on offer, however, numerous topranking athletes also have outstanding training and living conditions within the county. The so-called “4-doors model” of integrated sport promotion is now copied worldwide.

Leisure offers for the whole family, and increasingly for older persons too, are a fundamental element of why the quality of life in Rhein-Kreis Neuss enjoys such a high standing.

1 Winter sport, Neuss: Skiing and snowboarding in Europe’s largest indoor hall, busy 365 days a year.

2 Golf, Korschenbroich: More and more areas are being developed for golf.

3 Riding, Meerbusch: More than 7,000 horses – horse-riding and horse breeding are becoming increasingly important in the county.

4 Canoeing, Grevenbroich: Despite the leisurely way in which the Erft mostly flows along, its waters are fairly wild in several places.

5 Inline skating, Rommerskirchen: The flat countryside provides ideal conditions for this young mass sport.

6 Basketball, Grevenbroich: The Elephants are a real force to be reckoned with at top division level in Rhein-Kreis Neuss.

Entertaining activities



Rhein-Kreis Neuss: Where the people live well and gladly.

welcome

Rhein-Kreis Neuss: Where it is more important to see than be seen.

bienvenue

Rhein-Kreis Neuss: Where there are many ways to reach your destination.

いらっしや

Rhein-Kreis Neuss: Where the people are tied to their roots and outward-looking.

witamy

Rhein-Kreis Neuss: Where strong forces pull together.

welkom

Rhein-Kreis Neuss: Where all the world is warmly welcome.

欢迎

Rhein-Kreis Neuss: Where trainees are diligently supported.

Rhein-Kreis Neuss: Where many traditions have a future.

добро пожаловать

Rhein-Kreis Neuss: Where good things are so close to hand.

willkommen

Rhein-Kreis Neuss: Where the people know how to celebrate.

いませ

Rhein-Kreis Neuss: Where there are manifold things to do during leisure time.

bienvenidos

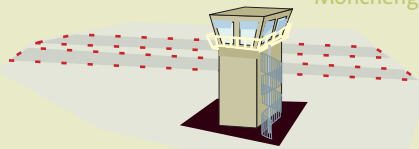
Rhein-Kreis Neuss: Where electricity doesn't just come from the socket.

rhine

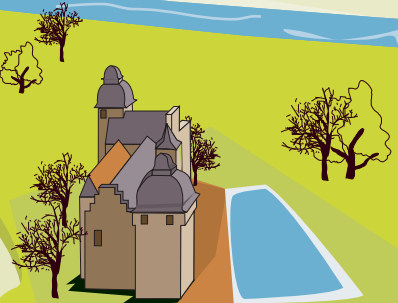
KREIS VIERSEN



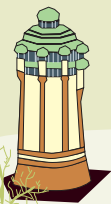
Flughafen
Mönchengladbach



Schloss
Myllendonk



MÖNCHENGLADBACH

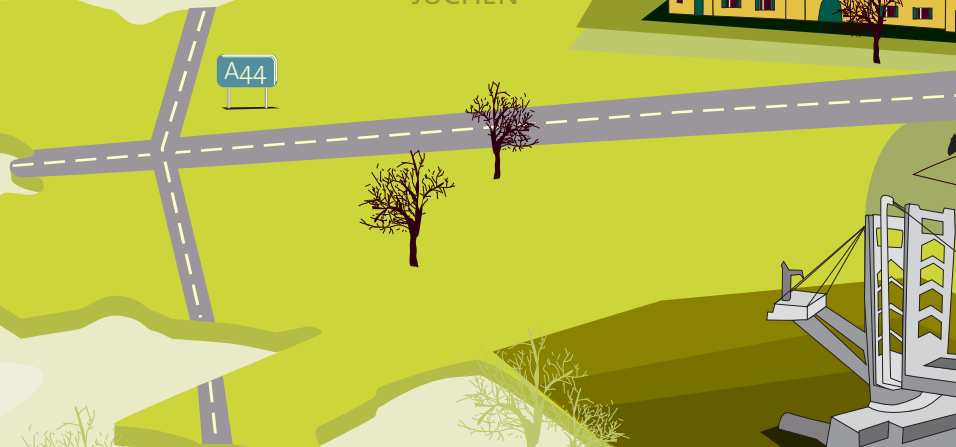


Wasserturm
Mönchengladbach

JÜCHEN

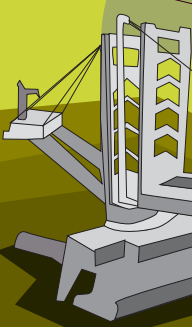


A44



KREIS HEINSBERG

KREIS DÜREN





KREFELD

Burg Linn

Schloss Neersen

MEERBUSCH

A57

A52

Nordkanal

Kaarster See

KAARST

KORSCHENBROICH

Radsportzentrum Kaarst

Regio-Bahn

Liedberg

Skihalle

Stiftung Schloss Dyck

Nikolauskloster

Raketensstation Homburg

Haus Katz

A46

Landesgartenschau-gelände Grevenbroich

A540

GREVENBROICH

Braunkohle-kraftwerk Frimmersdorf

Braunkohletagebau Garzweiler

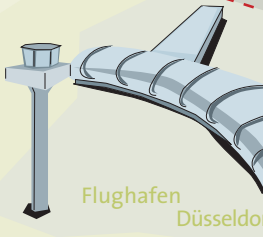
Braunkohlekraftwerk Neurath

RHEIN-ERFT-KREIS

S. Ulrich



DUISBURG



Flughafen Düsseldorf

DÜSSELDORF

A44



Forum Wasserturm



Teloymühle



Haus Meer



19

Hafen Neuss/Düsseldorf

NEUSS

Quirinus-Münster



Galopprennbahn

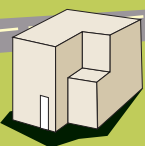


Kreishaus



Obertor

Museum Insel Hombroich



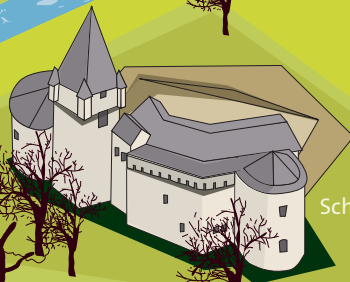
Neuer Zollhof

Rheinturm

A46

n broich

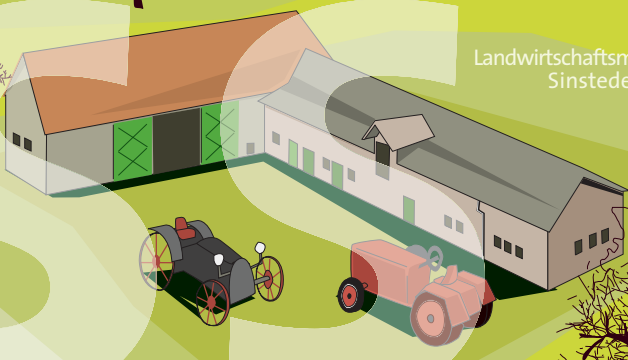
Erft



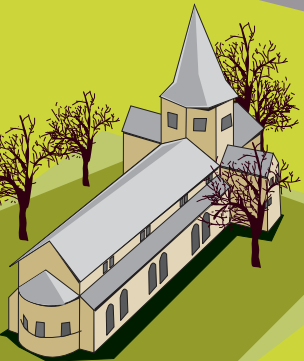
Schloss Hülchrath

ROMMERSKIRCHEN

Landwirtschaftsmuseum Sinsteden



Kloster Knechtsteden



kulpturenhallen Rückriem

Kölner Dom



RUHRGEBIET

LDORF

Neanderthal-Museum

KREIS METTMANN

RHEIN

Rhein

Kreiskulturzentrum
Zons

A57
DORMAGEN

Bayer Dormagen

Nievenheimer See

KÖLN

Flughafen Köln/Bonn



2



3



4



5

The economic power on the Rhine: Top in North Rhine-Westphalia

Since 1991, the Rhein-Kreis Neuss has been at the top when it comes to economic growth in Germany's most populous federal state, North Rhine-Westphalia. Numerous factors contribute to this, its proximity to Düsseldorf and Cologne and other large cities, but also the location's high quality of life, which has been repeatedly confirmed.

Excellent transport links secure logistical advantages for the companies in Rhein-Kreis Neuss. The decisive plus, however, the qualified workforce ensures the so-called "soft factors" are highly attractive. People live well and gladly here. Because apart from a job they find an environment which is friendly to families and attractive surroundings.

Agriculture and hotel & catering businesses, trade and industry, services – and above all, SMEs instead of mediocrity

Today around 28,000 firms of all types, sizes and sectors have their company headquarters in Rhein-Kreis Neuss. Apart from industrial giants such as the CHEMPARK Dormagen or RWE in Jüchen and Grevenbroich, they also include the two worldwide largest aluminium rolling mills of Hydro Aluminium.

The structural change from an industrial to a service and information society is in full swing. A strong SME base forms the backbone of the successful development in Rhein-Kreis Neuss. And the joint business development policy of the county and its eight cities and municipalities contributes to the enterprise-friendly climate.

Trade and change between Düsseldorf and Cologne, Brussels and Amsterdam, Tokyo and New York

The county is opening up – for even more companies from all over the world. Import and export has a very long tradition here. Today, many international corporations have their German or European head office in Rhein-Kreis Neuss, and their number is steadily increasing.

Comfortable hotels and special locations with capacities for all kinds of different events are ideally suited for congresses and celebrations. Whether first class or high-tech, historically festive or artistically creative: Rhein-Kreis Neuss has the ideal ambience for virtually every event with individual service in a hospitable environment.

1 Neuss-Düsseldorfer Häfen: Germany's southernmost Rhine port and important container handling centre.

2 Production and sales, Neuss: Like 3M, many international firms use the outstanding economic infrastructure.

3 Research and development, Dormagen: Internationally Bayer has written industrial history – and the local town history.

4 Aluminium production, Grevenbroich and Neuss: Germany's largest smelting works and largest rolling mill.

5 Hammfeld business park, Neuss: Many international companies utilise the advantages of this location near Düsseldorf.

6 Mexx, Korschenbroich: Young fashion firms are breaking new ground in a traditional textile region.

Successful locations





1



2



3



4



5

Support trainees, set a precedent: From a very early age

The teaching network in Rhein-Kreis Neuss is densely linked. Apart from the elementary needs of systematic education and training, there are diverse other forms of support: For individual educational development and for advancing professional careers.

Competition with excellence: The vocational training centres

Modern forms of vocational training and further training ensure that trainees are integrated into working life at an early age.

Outstandingly well-equipped, thanks to investments amounting to millions, the county's vocational training centres combine the theoretical and practical training with the rich opportunities offered by the prospering economic region. In Dormagen the emphasis is appropriately on chemistry and related topics, in Neuss new IT job profiles are developed, among others, and in Grevenbroich there are first class offers, for example, in commercial and industrial trades.

Learning without borders: New forms of training and further training

The „Internationale Schule am Rhein“ (ISR – International School on the Rhine) was founded in 2003, at the initiative of the county, the city of Neuss and the chamber of commerce and industry of Mid-Lower Rhine. In the first year 16 nations were already united under one roof here in Neuss. The multilingual curriculum prepares children from kindergarten age for a world in which multicultural understanding is becoming increasingly important.

The county's own technology centre in Korschenbroich-Glehn and the Junior Management School in Kloster Knechtsteden are also treading new training and further training ground.

The county's sports boarding school under the roof of the Knechtsteden grammar school provides ideal educational opportunities for promising young talents in competitive sports of different types.

Studying is a top priority: Made-to-measure higher education

The polytechnic of economics & management (FOM) in Neuss offers 15 courses and internationally recognised qualifications. The Schloss Dyck Foundation is developing an institute of research and teaching for garden art and landscape culture. And the higher education facilities leave nothing to be desired when it comes to studying. With 45 universities and polytechnics, the Rhine-Ruhr region has the densest higher education landscape in Germany.

1 Rhein-Kreis Neuss vocational training centre, Neuss: Budding painters and decorators naturally learn the artistic principles of their field in Neuss too.

2 Rhein-Kreis Neuss vocational training centre, Dormagen: Anyone wanting to be successful in the chemical industry will find the best conditions at the Bayer location.

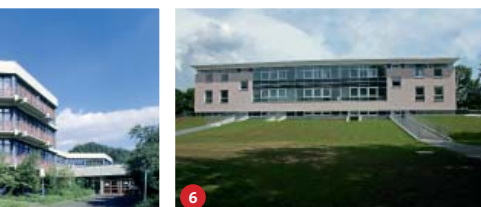
3 International school on the Rhine, Neuss: Multicultural training for Rhein-Kreis Neuss is developing into a centre of the universe.

4 FOM Hochschule für Oekonomie & Management (university of applied sciences), Neuss: offers studying while working or completing an apprenticeship.

5 Rhein-Kreis Neuss vocational training centre, Neuss: The vocational college of engineering and information technology, with more than 2,500 students, forms the heart of the facility in Neuss-Hammfeld.

6 Sports boarding school, Dormagen: provides ideal opportunities for promising young talents in competitive sports.

Educational prospects





1



2



3



4



5

Earth, wind, water and fire – elementary forces for existential needs

The lignite coal mining around Garzweiler takes place in Europe's largest contiguous deposits. The giant bucket-wheel excavators in the enormous open cast mine are the largest in the world.

In its lignite-fired power plant at Neurath, which works with the most modern plant engineering in the world, the RWE company has invested more than 2.2 million euros.

Yet power is not only generated from lignite coal in Rhein-Kreis Neuss. All the elements are used to supply electricity to the millions of people in the region. Of course, traditional water power no longer represents a significant source.

The wind farm on Vollrather Höhe is one of the largest in North Rhine-Westphalia. And a test field for testing and research into wind power has been built on Frimmersdorfer Höhe.

Mine, convert, expand, develop: Utilise resources, shape the living space

Gone are the times of tranquil windmills. They can still be found in many places in Rhein-Kreis Neuss as historic witnesses of power production, however, they are now only monuments of our cultural and economic history.

Cultivation of the landscape is one of the most important themes in Rhein-Kreis Neuss. Not least, this has to do with power production. Nowadays, sustainability is one of the key terms of a responsibly minded economy.

Ecological aspects such as resource conservation, recultivation, recycling and environmental protection are at the very top of the agenda in Rhein-Kreis Neuss when it comes to the future shaping of the living space. Expertise has been developed here in cooperation with industry that is now in demand worldwide.

Garzweiler lignite coal mine, near Jüchen: State-of-the-art technology is used for mining here.

2 Wind turbine generators, Grevenbroich: In the immediate vicinity there is a wind farm and a test field for wind power research and development.

3 Lignite coal-fired power station, Grevenbroich-Frimmersdorf: Here power is generated from one of the largest mining regions in Europe.

4 Erprather Mill, Neuss: Gone are the times in which water power made a major contribution to industrial use.

5 Braunsmühle, Kaarst: Before steam engines were introduced, wind was one of the essential driving forces of the economy.

6 Solar power system: Private power generation is also actively promoted throughout the county.

Natural energies





Flowing traffic on water, land, rails and in the air

Even though Rhein-Kreis Neuss is spacious, the whole region – with the Rhine, the Ruhr and the German-Dutch-Belgium triangle – is one of the most densely populated areas in Europe. An efficient and differentiated transport system is therefore all the more important.

The Rhine has been one of the most important transport routes between the Alps and the North Sea since time immemorial. It is still important for cargo shipping, and its popularity as a tourist route is unbroken.

Neuss port, in economic association with the port of the state capital Düsseldorf, is one of Germany's largest inland ports and is the southernmost port accessible to coastal motor vessels on the Rhine. Container transshipment is growing in importance. So-called combined transport has extraordinarily good conditions here, as the port has its own railway and a motorway connection.

1 Fleher Bridge, Neuss: The southernmost of the seven bridges linking Rhein-Kreis Neuss with Düsseldorf.

- 2 Düsseldorf International airport: An important factor for tourism and economic development.
- 3 Motorway interchange, Kaarst: The important traffic junction links the A57 northsouth motorway with the A52 east-west route.
- 4 Regiobahn Kaarst-Mettmann: The local public transport system mobilises the county and the region.
- 5 Neuss port, through its fusion with Düsseldorf port, is one of Germany's largest inland ports and an important cargo handling centre for international trade.
- 6 Railway bridge, Neuss: One of the many links with the state capital.

Roundabout to all four corners of the earth

Numerous motorways, railway lines and Rhine bridges ensure that traffic flows. All the county's eight cities and municipalities can be reached by rail and have a connection with one of the five motorways. In Rhein-Kreis Neuss the way really is the goal. The excellent infrastructure is its most important locational advantage for highly successful economic development.

It is not only the links within Rhein-Kreis Neuss which are important for the traffic flow, but also the connections with the outside.

Industry and tourism profit from the air traffic routes: The international airports in Düsseldorf and Cologne virtually lie "on the doorstep". The trade fairs in Düsseldorf and Cologne can also be reached quickly. The Ruhr and Netherlands are only a short trip away.

There is also a well-developed infrastructure for cyclists and pedestrians, ramblers, joggers, skaters, riders and everyone who likes to keep moving.

Well connected





1



City, country, river: The county opens its arms

The cultural landscape of the Rhineland, which has formed over the millennia, is characterised today by friendly coexistence in a good neighbourhood. What would the large cities be without the relaxing open spaces? The rural areas profit equally from the urban offers in the immediate vicinity.

One of the oldest and still most vital cultural regions in Europe lies on the Rhine. Düsseldorf, Cologne, Mönchengladbach, Krefeld, Duisburg, Kreis Mettmann, Kreis Viersen, Kreis Heinsberg, Kreis Düren and the Rhein-Erft Kreis are the immediate neighbours of Rhein-Kreis Neuss.

Together the region offers an environment in which relaxation and leisure can be combined with business in the most pleasant way. Art and culture of international standing, spectacular concerts and music events, opera houses, museums, galleries and theatres leave nothing to be desired. Here the people enjoy going out, amuse themselves and can buy exclusive luxury products.

Romanesque, Rhenish, Bergisch: Simply European

The Germans of the Lower Rhine have seen many nations come and go. Whether Romans or Spaniards, Carolingians or Merovingians, the French or Prussians – something has definitely been retained: Tolerance, which is reflected in the proverbial Rhenish manner.

A peaceful Europe was never merely an idea in Rhein-Kreis Neuss. Its multicultural partnerships have had a lasting formative influence on the people here. Where there used to be borders, they now build bridges. And naturally feel part of the new continental community.

Good neighbours



Media Port,
Düsseldorf
www.duesseldorf.de

2 Schloss Wickrath,
Mönchengladbach
www.moenchengladbach.de

3 Burg Linn,
Krefeld
www.krefeld.de

4 Museum Windmill
in Breberen,
Kreis Heinsberg
www.kreis-heinsberg.de

5 Schloss Krickenbeck,
Kreis Viersen
www.kreis-viersen.de

6 Cologne Cathedral,
Cologne
www.koeln.de

7 Duisburg-Nord
Landscape Park,
Duisburg
www.duisburg.de

8 Rursee,
Kreis Düren
www.kreis-dueren.de

9 Erft River,
Rhein-Erft-Kreis
www.rhein-erft-kreis.de

10 Neanderthal Museum,
Kreis Mettmann
www.kreis-mettmann.de



Good contacts

Rhein-Kreis Neuss: Where the whole world is welcome.

The municipalities of Rhein-Kreis Neuss and their German and international partners



Stadt Dormagen

Kölner Straße 84
41539 Dormagen
Telephone: +49(0)2133 257-0
Facsimile: +49(0)2133 257-219
stadtverwaltung@stadt-dormagen.de
www.dormagen.de

Partners:

Saint André/ France
Toro/ Spain
Kiryat Ono/ Israel



Stadt Korschenbroich

Sebastianusstraße 1
41352 Korschenbroich
Telephone: +49(0)2161 613-0
Facsimile: +49(0)2161 613-108
stadt@korschenbroich.de
www.korschenbroich.de

Partners:

Carbonne / France
Finowfurt / Brandenburg



Stadt Grevenbroich

Am Markt 1
41515 Grevenbroich
Telephone: +49(0)2181 608-0
Facsimile: +49(0)2181 608-212
presseamt@grevenbroich.de
www.grevenbroich.de

Partners:

St. Chamond/ France
Celje /Slovenia
Auerbach



Stadt Meerbusch

Postfach 1664
40641 Meerbusch
Telephone: +49(0)2132 916-0
Facsimile: +49(0)2132 916-321
buergerbuero@meerbusch.de
www.meerbusch.de

Partners:

Canton de Foesnant / France
Shijōnawate / Japan



Gemeinde Jüchen

Am Rathaus 5
41363 Jüchen
Telephone: +49(0)2165 915-0
Facsimile: +49(0)2165 915-118
gemeinde@juechen.de
www.juechen.de

Partners:

Leers / France
Rebesgrün/Saxony



Stadt Neuss

Markt 2
41460 Neuss
Telephone: +49(0)2131 90-01
Facsimile: +49(0)2131 90-2488
presseamt@neuss.de
www.neuss.de

Partners:

Châlons-en-Champagne/ France
Rijeka/Croatia
Pskow/Russia
St. Paul/USA
Nevşehir / Turkey



Stadt Kaarst

Am Neumarkt 2
41564 Kaarst
Telephone: +49(0)2131 987-0
Facsimile: +49(0)2131 987-100
presse@kaarst.de
www.kaarst.de

Partners:

La Madeleine / France
Perleberg/ Brandenburg



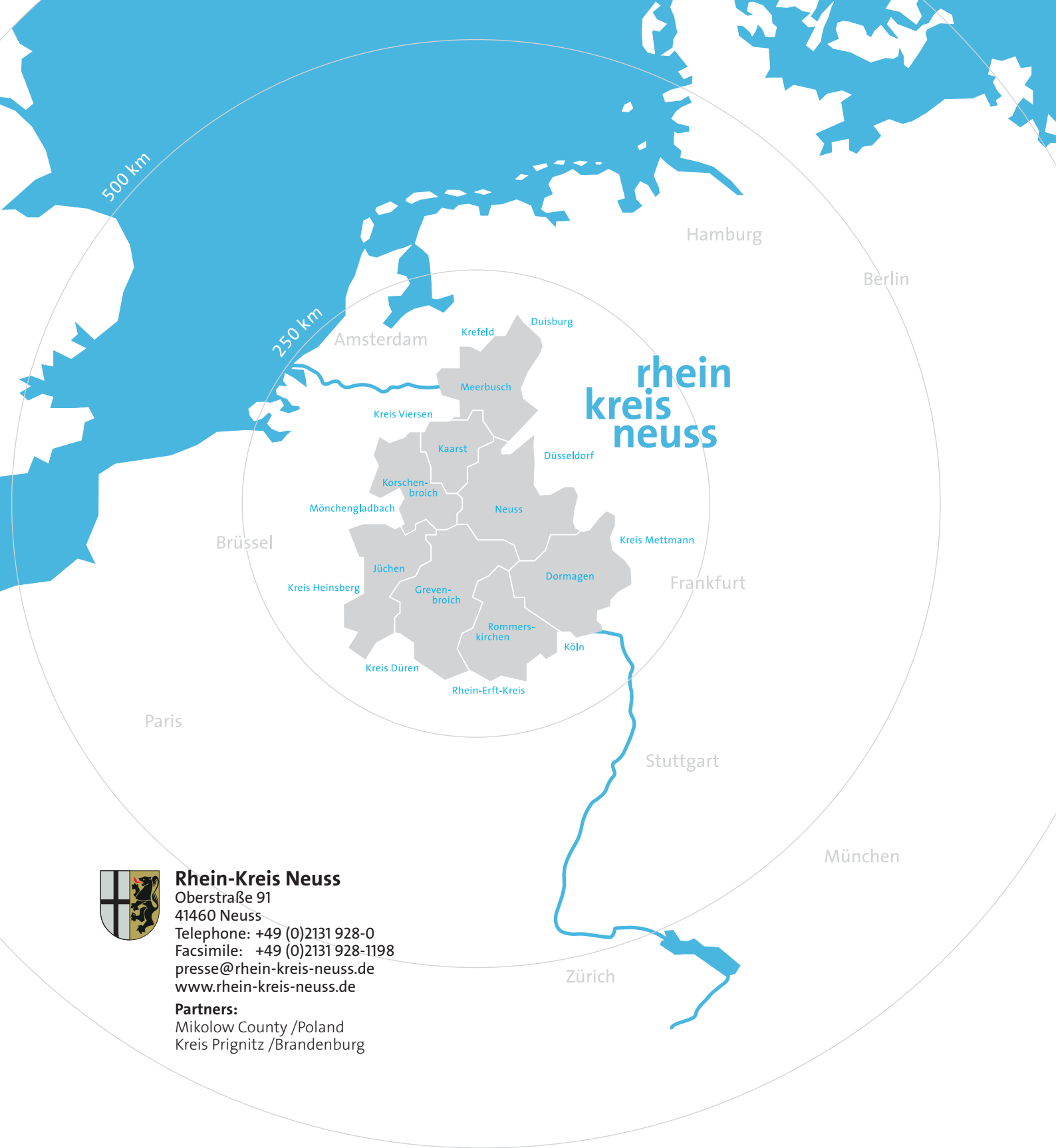
Gemeinde Rommerskirchen

Bahnstraße 52
41569 Rommerskirchen
Telephone: +49(0)2183 800-0
Facsimile: +49(0)2183 800-27
info@rommerskirchen.de
www.rommerskirchen.de

Partners:

Moulleron le Captif / France
Karstädt /Brandenburg

London



Rhein-Kreis Neuss

Oberstraße 91
41460 Neuss
Telephone: +49 (0)2131 928-0
Facsimile: +49 (0)2131 928-1198
presse@rhein-kreis-neuss.de
www.rhein-kreis-neuss.de

Partners:

Mikolow County /Poland
Kreis Prignitz /Brandenburg

Issued by
Rhein-Kreis Neuss
Der Landrat
PR Department

Editors
Harald Vieten,
Head of PR;
Prof. Wilfried Korfmacher

Text
Prof. Wilfried Korfmacher,
Zeichenverkehr;
Harald Vieten, Rhein-Kreis Neuss

Layout
Eilert Schildt

Illustrations / Graphics
Helen Otte
Daniel Stoffels

Photography
Allrounder Winter World, Bayer
AG, Helmut Coenen, Düsseldorf
Marketing & Tourismus GmbH,
Duisburg-Marketing,

Hermann Fahlenbrach,
gettyimages, Museum Insel
Hombroich, Hydro Aluminum,
Golfclub Schloss Myllendonk
e.V., Internationale Schule am
Rhein, Köln Tourismus, Krefeld,
Kreis Düren, Kreis Heinsberg,
Kreis Viersen, Michael Lübke,
Mönchengladbach, Alois
Müller, Neanderthal Museum,
Regio-Bahn, Rheinbahn AG,
Rhein-Erft-Tourismus e.V., M.
Reuter, Rhein-Kreis Neuss, Tomas
Riehle / Artur, Sigrid Scheuss,
Eilert Schildt, Corneel Voigt,
Andreas Woitschütze, Thilo
Zimmermann

Translation
Transmit – Deutschland
Lanzillotta Translations

Production
das druckhaus
beineke dickmanns gmbh

Copyright
Rhein-Kreis Neuss
2012



rhein
kreis
neuss

Neuss county authority:
Located in the heart of
Neuss' inner city.
(Photo above)

Fleher Bridge, Neuss:
The southernmost of seven
bridges, which connect
Rhein-Kreis Neuss and
Düsseldorf.
(Photo on back cover)

Rhein-Kreis Neuss · Der Landrat
Press and PR department
Oberstraße 91 · 41460 Neuss
Telephone: +49(0)2131 928-1301
Facsimile: +49(0)2131 928-1399
presse@rhein-kreis-neuss.de

www.rhein-kreis-neuss.de



www.facebook.com/
rheinkreisneuss
www.twitter.com/
rheinkreisneuss

ClimatePartner[®]
climate neutral
Print | ID: 53124-1204-1004